

GV3785 USER MANUAL

Contents

BRIEF INTRODUCTION	1
FEATURE	1
BASIC PERFORMANCE	2
PRODUCT DETAILS	3
PACKING LIST	3
FRONT VIEW	4
BACK VIEW	6
REMOTE CONTROL.....	8
BASIC OPERATION	11
USAGE PREPARING	11
OPERATION OF FILE SHARING	20
OPERATION OF PRODUCT USAGE	23

MAIN MENU	24
FILE COPY MENU	35
INTERNET SERVICES	37
SETUP MENU	39
WIRED LAN SETUP	47
WIRELESS SETUP.....	50
INSTALL AND USE OF BT/SAMBA	59
THE FIRST INSTALL	59
IP ADDRESS SETTING.....	62
NEIGHBOR WEB INTERFACE.....	63
MAINTENANCE NOTICE.....	75
FAQ	76
OTHERS.....	88

Brief introduction

Feature

The product is a new kind of multimedia player product. The product can provide good watching. Meanwhile, it can also store and play many kinds of video files. When the product is connected to the internet, it provides the Internet service. The product, which is facilitated with many ports, can show you pictures and videos with high definition. It is really your desirable entertainment product.

Basic performance

Video decoding-MPEG 1/2/4, Divx, Xvid, H.264, VC-1, RM/RMVB

Video Format- WMV, MKV, MOV, AVI, MP4, MPG, TS/M2TS/TP/TRP,
FLV, ISO, IFO, VOB, DAT, RM/RMVB

Audio- MP3, WMA, WAV, AAC, OGG, FLAC, Dolby Digital, DTS Digital

Image-JPG/BMP/PNG/GIF

USB HOST- Connection USB mass storage device

USB2.0-High speed USB2.0 port

HDMI-HDMI high definition port

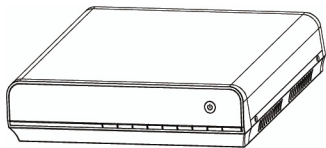
1080P output -Full HD 1080P (1920x1080) decoder output

Network - WLAN (IEEE 802.11 b/g/n), RJ45 port,10/100M

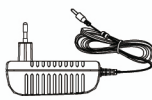
Product details

Packing list

Check the accessories after receive the product. If there are some missing, please contact immediately with your supplier to insure your consumer's right.



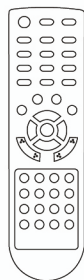
Media palyer



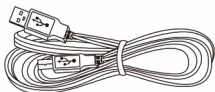
Power adapter



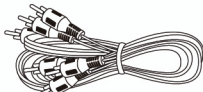
CD



Remote control



USB cable



AV cable(Red,Yellow,White)

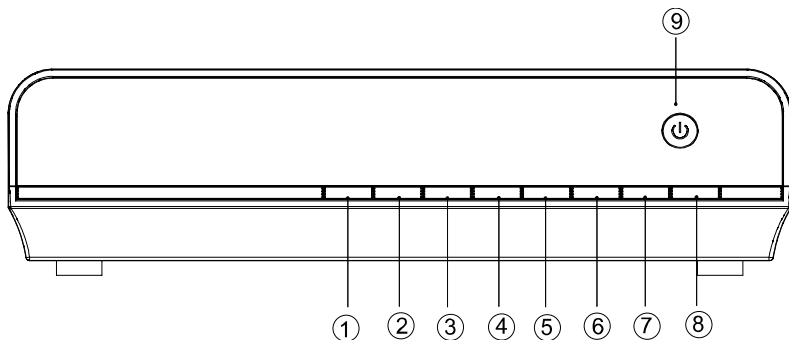


Screw



Battery

Front view



Button definition

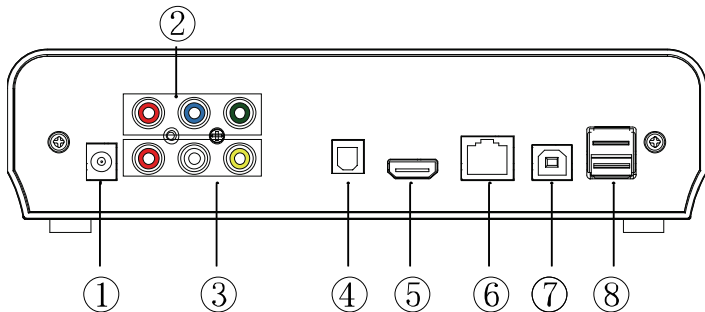
	Button	button definition	instruction
①	MENU	Menu button	Press shortly to return the

			first menu
②	SETUP	Setup button	Press shortly to enter the setup menu
③	■	Stop button	Press shortly to stop current operation
④	◀	Left button	Press shortly to move cursor left
⑤	▶	Right button	Press shortly to move cursor right
⑥	OK	Enter button	Press shortly to confirm the current operation
⑦	▲	Up button	Press shortly to move cursor up
⑧	▼	Down button	Press shortly to move cursor down
⑨	⏻	Power button	Press shortly to switch on/off the power

LED definition

LED	LED definition	Instruction
Power	Power LED	Blue light when switching on, red light when standing-by.





Back View



Port definition

	Port	Port definition	Instruction
①	DC IN	Power port	Inputs power
②	YPbPr	Component video output port	Outputs progressive scan component video
③	AV	Composite video output port	Outputs composite video and audio
④	Optical	Audio output port	Outputs digital audio signal
⑤	HDMI	High definition port	Outputs digital signal via HDMI port
⑥	LAN	Network port	Connects to network via internet port
⑦	USB	USB port	Via this USB port for PC communication
⑧	USB HOST	Outside USB port	reads and writes outside USB storage via USB port

Remote control

BUTTON	FUNCTION
POWER 	Turn on and off in the stand by mode
MUTE 	Turn on or shut audio output
TV SYSTEM	Press to switch between NTSC, PAL, 480P, 576P, 720P 50HZ, 720P 60HZ, 1080I 50HZ and 1080I 60HZ, 1080P 50HZ,1080P 60HZ.
0-9	Press to input digital
GOTO	Press to play the video at the chapter after setting schedule
GUIDE	Switches to the main menu.
FR 	Press to fast rewind from current play and again to select the speed
FF 	Press to fast forward from current play and again to select the speed
RETURN	Return to the previous menu

SETUP	Opens the settings menu
◀	Press shortly to move cursor left
▶	Press shortly to move cursor right
▲	Press shortly to move cursor up
▼	Press shortly to move cursor down
OK	Press this button confirms a selection and starts the playback of a media file.
PREV ◀◀	Press to return to previous file
NEXT ▶▶	Press to go to next file
VOL-	Press to decrease the volume
VOL+	Press to increase the volume
OPTION	Opens the options menu in the browser to rename or delete the file
STOP ■	Ends the playback of a media file
PAUSE/STEP ⏸▶	Pause / playback by step
REPEAT	Press to set repeat option: chapter, Title or off

COPY	Enter the copy mode
SELECT	Press to select the file and then press “confirm” to add or delete file in the playlist; Select copy files or folders in the copy mode
CONFIRM	Press to add or delete option in playlist
INFO	Press to display time, title, information of chapter when play video and photo
SUBTITLE	Switch the subtitle if the file supported
SLOW	Press to have slow motion: (1X, 3/4X, 1/2X, 1/4X, 1/8X, 1/16X.Press OK to resume regular play mode.
AUDIO	Switch the audio format output
ZOOM	Press to zoom when playing photos or video programs Photo zoom levels: 2X,4X,8X,16X Video zoom levels: 1X,2X,3X,4X,8X
ALL	Show all the folders and files of the current directory.

MUSIC	Show the audio files of the current directory.
PHOTO	Show the photos of the current directory.
MOVIES	Show the video files of the current directory.

Basic operation

Usage preparing

1, Power connection

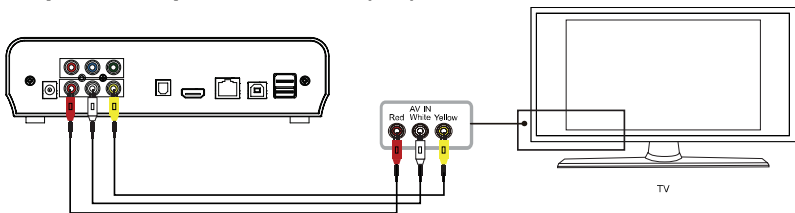
Take out power adapter from the package and connect

2, Connection of TV audio and video output

The product is designed with multi-output, including composite (AV), component (YPbPr), optical and HDMI. Individuals can select different interface according to various needs. The product can detect video output automatically, making the operation friendly and convenient.

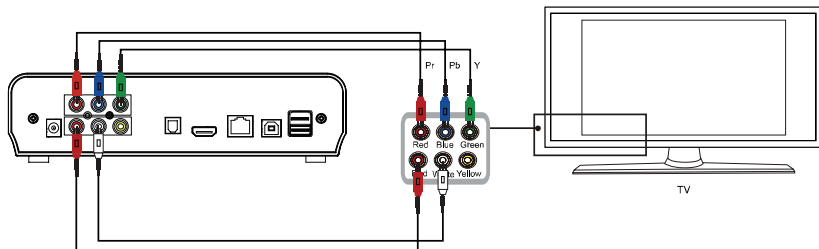
Please refer to the following instruction for connection to avoid any problem.

Composite output connection(AV)



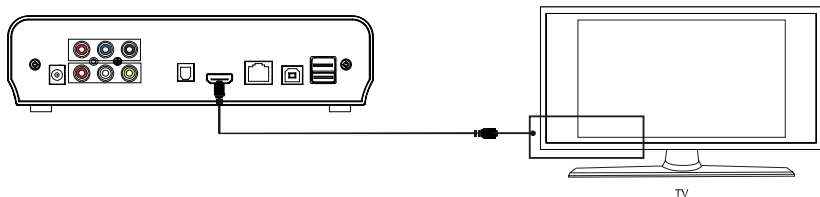
Plug the yellow connector into the AV output of product and AV input of TV, and plug the red and white connector into the audio input of TV or HIFI. Turn on the TV and select AV mode. Turn on the product and TV displays the interface of initiation.

Component output connection (YPbPr)



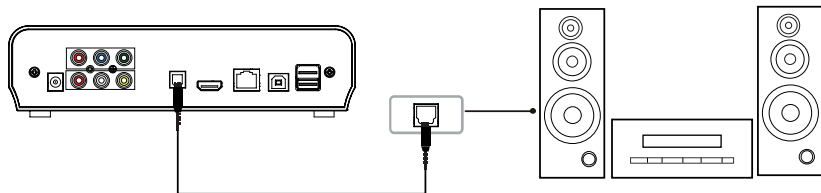
Component output mode: Plug the YPbPr cable into the output of product and input of TV. Because the cable is only for video signal, another AV cable is necessary. Plug the red and white connector of AV cable into the audio output of product and audio input of TV or HIFI. Turn on TV and select YPbPr mode. Turn on the product and TV displays the interface of initiation.

HDMI output mode



HDMI is an output with the best audio and video effect which outputs digital video and audio composited at the same time. Connect the HDMI cable to the output of the product and the display device with the HDMI input. Select HDMI mode in the TV until it displays the interface of initiation.

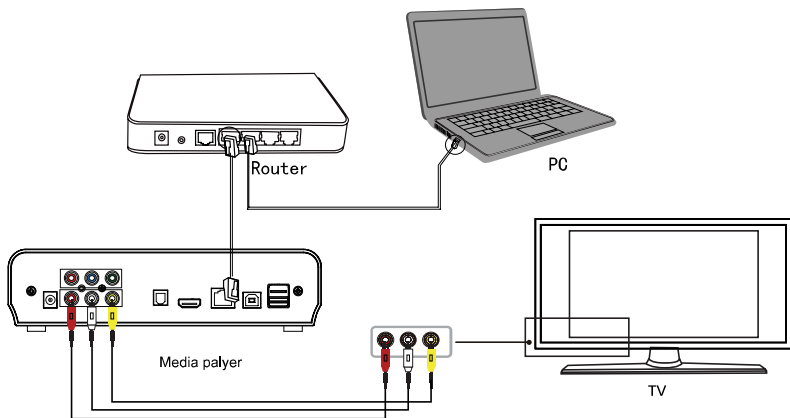
Optical output mode



Optical output: Connect the product optical connector with the other one from video or audio device by optical cable. Then enter the product's audio interface, select the Digital Output option "SPDIF LPCM" or "SPDIF RAW". It is available to enjoy 5.1 high quality sounds through a multi channel decoder/amplifier with optical input.

Connection and setup of network

The product can play the files stored in the PC directly through network.
Please connect the RJ45 cable according to the following illustration.
The network connects well when the LED of network status blinks.



Connect the video output. Press “setup” key or select “setup” menu in the initiation interface. Select “Network” option in the setup window and press “OK” to confirm. It is available for both automatic and manual IP setup. Press “setup” key again to exist after setup. Please see " **Wired Lan Setup**" for more details. Before access the PC through network by the product, the media files must be shared in the network. Following is the setup of media file sharing in PC

The use of USB HOST interface

Player has ability to expand large-capacity. The USB HOST port can read external mobile hard disk, U disk, digital cameras, card readers and other data storage devices.

Even without the installation of hard drive players, you can connect external storage devices through the USB HOST interface. To direct play a variety of high-definition formats high-fidelity audio and video files stored in external storage devices. To watch HD movies and digital photos are more palatable, at the same time the output digital

audio signals to audio equipment can feel the shock of high-fidelity sound effects.

The USB interface connect to the PC

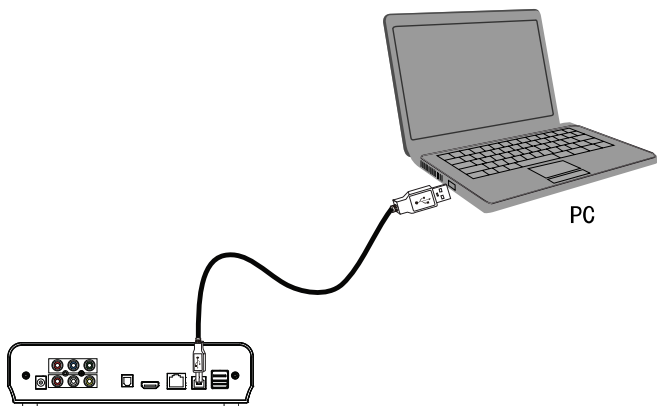
This HDD Player is also a personal multimedia files storage device and can be used by connecting to the PC.

1, Connect to the power supply

While using the HDD player with PC, power supply is also needed.

2, Connect to PC with USB cable

Connect the HDD Player to PC with USB cable then you can copy and transfer data.



Follow the instruction of the above picture and connect the device to PC.

Power on the PC and enter the system. The PC detects the device automatically and then the device can be used as an external USB storage device. After data transfer finished, please remove the USB storage device safely (click the USB device icon to stop the USB device and then pull out the USB cable).

Notes:

1. Please don't power off when it connect to PC for reading and writing.
2. If there is no USB detected after connected with USB cable, maybe the PC is operating other program, please pull off the USB cable and wait about 10 seconds then connect again.

This HDD Player is also a personal multimedia files storage device and can be used by connecting to the PC. Individuals can browse and copy files easily.

Operation of file sharing

Operation of file sharing under Windows

Two conditions are necessary for a successful play of network connection.

1. Folder sharing and safety setup

2. Set the same gateway and subnet mask address.

Procedure of file sharing under Windows XP

1. Select the folder need to be shared, right click mouse and select the option "Sharing and safety", left click the mouse.
2. Select "sharing" in the property option and select "share this folder on the network" and click "Apply" for confirming to exist.
3. Open "Control panel- Management tool-Computer management-Local users and groups" and click "Users" option. Right click Guest and select "Properties".
4. Select 'users can not change your password' and 'password never expires'. keep the other checkboxes unchecked.
5. Open "Control panel- Network connection", and select "Local Area connection" and right click to select "Properties".
6. In the Pop-up window, select 'Internet protocol (TCP/IP)'
7. Set up the relevant IP address, subnet mask and gateway, can also choose to automatically design.
8. Completion of Windows XP network sharing.

9. Finally, please close the Windows Network Connection Firewall

Operation of file sharing under Windows Vista

1. Please make sure that the Vista operation system is installed as Administrator supper user.
2. From the desktop select "start- setup-control panel-select user account"
3. Open User account and select "open a new account" and name it "Guest"
4. Select the folder need to share and right click the mouse, then select the "sharing" option.
5. Open the shared folder and add guest account to the list
6. Give the right to all the users after adding the Guest into the list.
7. Select "sharing", and then the folder is shared.
8. Finish sharing
9. Operate the device as the same as operate in XP system

Operation of product usage

When connecting the power supply for the first time, the device will power on automatically and appear the below menu.

Please read the following instructions carefully to understand the function of each option.

Main menu: Browse and play the media files.

Pressing the “Up” and “Down” navigation buttons to choose the source devices on the main menu. Press movie, photo, music or all button on the remote control to browser movie, photo, music files stored in a HDD, USB device, NET or Playlist and press OK button to play.

File copy: Copy files from one device to another

Press COPY buttons on to enter the copy mode and with this function, individual can copy files from Hard Disk, NET, USB from a device to another.

Setup: Enter the setup menu

To enter the setup menu, select SETUP on the remote control or select Setup button on the main menu page. With this function, individuals can configure System, movie, music, photo, network settings.

Main Menu

The main menu allows you browse and play music, photo and movie files stored on a HDD or an external USB device , Network . Playlist.

Press “▲” and “▼” to select the device on which the media is stored. Choose from HDD, USB (for media stored on an external flash disk), NET and press OK button to confirm and play the files in the selected device.

File Range function

To make file browsing and playing easier, there is a function to range all files into different folders named “All”, “Music”, “Photo” and “Movie”, individuals can switch to any folder by pressing “All”, “Music”, “Photo” and “Movies” four buttons on the remote control.

Browsing Music

Press the MUSIC button on the remote control to enter the music play mode.

Press “▲” and “▼” to select the folder containing your audio files. A thumbnail strip appears at the bottom of the screen, along with song information. Press “▲” and “▼” to select the file you want to play and press OK. This browsing music function supports MP3, WMA, WAV, AAC, OGG, FLAC, Dolby Digital...format Playback.

Browsing Photos

Press the PHOTO button on the remote control to enter the photo play mode.

Press “▲” and “▼” to select the folder containing your photo files. Enter the folder press “▲” and “▼” to select the photo you want to view and press OK the photo is displayed full screen. Depending on the type and size of the picture, you may have to wait some time before the playback starts.

While browsing a photo, you can press “◀” and “▶” to rotate a photo in any angle. Beside rotating a photo, you can press ZOOM to zoom in/out that photo, four zoom levels (2X,4X,8X16X) are available. This browsing photos function supports High Definition Photo (JPG, BMP, PNG, GIF) Playback.

If the SLIDESHOW is enabled in the Setup (“Photo Setup” menu), then press Setup button to return to the pictures you want to playback, the slideshow will start automatically.

If you want to playback some music during the slideshow, simply make sure that you copy your music file(s) in the same directory as the pictures. Then choose the “Folder” option in Background Music (“Photo Setup” menu). Press the OK button to playback your slideshow with the music background.

Note:

1. While listening to audio files, you can browse the photos at the same time.
2. If you press ZOOM during playback slideshow, the slideshow will automatically stop.

Browsing Movies

Press the MOVIES button on the remote control to enter the movie play mode.

Press “▲” and “▼” to select the folder(s) containing your movie files. Enter the folder press “▲” and “▼” to select the movie you want to view and press OK. The movie is played full screen.

This browsing movies function supports High Definition Video (720P, 1080i, 1080P) Playback.

For example:

1. MPEG1(DAT ,MPG)
2. MPEG2(VOB, MPG, TS)
3. MPEG4(AVI,DIVX,XVID, MP4)

4. H.264(AVI,MKV,MOV)

5. RM/RMVB,FLV,ISO

Note: When play the HD Video, you can according the movie resolution to adjust HD Video output. See “Creating HD Resolution of SETUP menu” for more details.

Subtitle

The product supports subtitle documents in formats of SSA, SMI, SRT, SUB and so on. When the video being played supports the corresponding subtitle format, the subtitle can be switched, displayed, or hidden through pressing the SUBTITLE controlling key. Meanwhile, the size and position of the subtitle can also be adjusted through direction keys. When the movie is played with the subtitle showed on the screen, you can press “▲” and “▼” to change the subtitle’s position in the screen, and press “◀” and “▶” to change the size of the subtitle, with “▶” to enlarge and “◀” to reduce.

Browsing All

Press ALL button on the remote control to enter browsing all file.

Press “▲” and “▼”to select the folder(s) containing your all files(Beside Music ,Photo and Movie). Enter the folder press “▲” and “▼”to select the file you want to view and press OK to play.

NETWORK

When the product is connected to Network (referring to network settings), you can choose the menu of NETWORK to access the shared files, there are two options to choose: My Shortcut and My Neighbors.

My Shortcut

When you are browsing NET, you can choose the PC name from the menu or you can set “Specific File Server IP” and access it from “My Shortcut” in the menu. And then you can browse the shared files on the network .

My Neighbors

When you are browsing NET, you can choose the PC name from the menu or you can select “My Neighbors” to access .And then you can browse the shared files on the network .Details refer to the Network in Setup menu.

UPNP

The full name of UPNP is Universal Plug and Play.

UPNP criterion is based on TCP/IP protocol as well as new internet protocols aim at communication between facilities. In fact, UPNP is made in the hope that all the facilities connected to the internet can communicate without being interrupted by gateway in the future, so that our communication in the internet can become more fluently, documents transmission can become more convenient by using software that supports UPNP, and internet applications which cannot be used before can be operated in the future. These are all the convenience brought by UPNP.

This product is a multimedia player that supports UPNP. Before using UPNP function, please make sure that computer connected with the product in LAN has installed software that support UPNP. If not, please install a multimedia play software or share software that support UPNP gateway protocol, and then open the UPNP share function in the software, so that the access speed can be quickened largely.

For example, connect the player to the family LAN, and then multimedia documents shared in the Media Player 11 software in the computer in study can be accessed in the living room through UPNP.

Firstly, connect the player to the family LAN. You can refer to network connection instructions to connect the player.

Secondly, install software that support UPNP gateway protocol.

Before using UPNP function, you need to install software that support UPNP gateway protocol in your computer and then start the share function. Such as install a Media Player 11 software that support UPNP function (remark: former edition of Media Player 11 doesn't support UPNP function) in your computer.

Thirdly, share documents through setting the software.

After installing the software, open the software's interface, choose "Media Base" in the main interface of the software, and then choose "add to the media base" in the pull-down menu. After adding some documents or folders to the media base, choose "media share" in the pull-down menu. You can also set the types and positions for the shared documents, such as "music, picture or video" and so on.

Fourthly, use the player's UPNP function.

When the setting of the shared documents is finished, choose UPNP option in the main interface of the player to enter, and then the player can search out computers installed with UPNP software in LAN. Enter your computer, and you can see multimedia documents shared through Media Player 11 in your computer. Using UPNP is more convenient and faster than using the player's network function. The player can access to computers without being interrupted by gateway, avoiding fussy operations like inputting user name, password and so on. Meanwhile, the function of UPNP is stronger, for example, through setting the options of Media Player 11, multimedia documents can be chosen and classified according to different ways, thus the information

can be shown in a more detailed way, helping you to find what you want among plenty of documents, bringing convenience. All the above are advantages of UPNP.

Playlist

You can use the navigating keys “UP” and “DOWN” to browse multimedia documents like pictures, music, movies and so on in the hard disk of your player. Press “SELECT” to choose document and press “CONFIRM” to add the document to the playlist. Next time you can enter “Playlist” directly to choose shortcuts of the documents and play them, avoiding trouble of searching documents, saving time for the users.

Notice: Only documents in the player’s hard disk can be added to the playlist, documents in other peripherals cannot be added in. And the first hard disk partition used should be the primary partition. If the first partition is an extended partition, this function may not be usable.

File Edit Menu

Press “▲” and “▼” to select the file or folder, press OPTION to display the Edit tab.

Return	Select to return to the main screen.
Rename	<p>To rename a file, do the following:</p> <ol style="list-style-type: none">1. Press “▲” and “▼” on the remote control to select the Rename tab from the menu bar.2. Press OK on the remote control. The name entry screen appears.3. Use the navigation arrows to select letters and numbers. Select CAPS to toggle between uppercase and lowercase letters. Press <- to delete a letter. Press -> to insert a space. Press OK to input each letter or number.4. Once you have entered the new name, select OK

	<p>and press OK to confirm all changes.</p> <p>If you want to cancel the naming during the process, press RETURN.</p>
Delete	<p>To delete a title, do the following:</p> <ol style="list-style-type: none">1. Press “▲” and “▼” on the remote control to select the Delete tab from the menu bar.2. Press OK to confirm and delete the file.3. A confirmation message appears. Press “▲” or “▼” and select OK.4. Press OK to delete the selected file. To cancel delete, select Return.

File Copy Menu

The File Copy allows individuals to copy files between USB, HDD, NET. Select “File Copy” from the Guide menu or select “COPY” on the remote control .It is very easy to copy files between various devices.

Copying operation

Step 1: Select Source Device

Press “▲” and “▼” to select the device which need to copy at first after entering the File copy interface,. Then press “▶” to select Destination Device, press “◀” to return.

Step 2: Select Destination Device

Press “▲” and “▼” to select the device of the Destination after go to Destination sector. Then press “▶” to next step, and press “◀” to return.

Step 3: Select copy files or folders

At Source sector, press “▲” and “▼” to select and press “SELECT” to select file or folders which need to copy. “√” appears at right side of selected file or folder. Then press “▶” to next step, and press “◀” to return. Can only choose a maximum of eight file or folder

Step 4: Select the folders of Destination

Press “▲” and “▼” to select a target folder at the destination sector.

Then press “▶” to next step, and press “◀” to return.

Step 5: Copy Status

At top menu, select OK to copy, select No to cancel.

After copy finishing, the system will display “File Copy is completed!”, or will display “File Copy failed!”

Select “OK” to browse the copied files, or select “No” to return to Video.

Internet Services

If the product is connected to the Internet (details referring to the wired Lan setup or wireless setup), you can enjoy internet services. Internet Services includes various kinds of services on line with which you can browse media files on the internet without using PC. Select the *Internet Services* in the guide menu and press OK button on the remote control.

Then you can access to the internet management interface, which includes Video, News, and Photos.

NOTE: As the version of firmware may be updated anytime, please refer to the instruction of actual delivery as standard.

Video

Press the navigation button on the remote control to select the *video* and press OK button to confirm. Enter video arrangement interface, you can find *You Tube Video* and other videos. Press the navigation button to select the one you want to watch. e.g. choosing *You Tube video*, you can search, browse and sort the videos on line.

News

Press the navigation button on the remote control to select the *News* and press OK button to confirm. Then users can enter news management interface, here you will find *NPR News*, *BBC News* and so on. Press the navigation button to select your favorite news web and press OK button to confirm, then you can browse various kinds of

news, such as sports, finance, entertainment and so on.

Photos

Press the navigation button on the remote control to select the *Photos* and press OK button to confirm. Then users can enter photos management interface where you can find the titles: *Picasa*, *Flicker* and so on. You can choose your favorite photos and press OK button to browser.

Setup Menu

Select "Setup" option or directly press "Setup" button on the remote controller to enter the setup menu. It is possible to configure Photo, Audio, Video, Network and System.

Select any option by pressing "◀" and "▶" on the remote controller, and press OK to confirm or press "Return" to exit. Press "Setup" button again on remote control to exit from setup menu.

Changing System Settings

Menu Language	Select to choose the OSD (On Screen Display) language. Press ▲ and ▼ to select the language. Press OK to confirm.
Text Encoding	Select to choose the text encoding language. Press ▲ and ▼ to select the text encoding language. Press OK to confirm.
Login Control	ON/OFF. If Login control is ON, you are asked to input the username and password when you login the neighbor web, if Login control is OFF, you can directly login without inputting anything.
BT/Samba Info	Showing player BT/Samba installation information.
System Update	View the current software version and update the software of the product.
HDD Format	Select to HDD Format.
Restore Default	To restore the factory's settings

Changing Photos Settings

Press “◀” and “▶” on the remote control to select the Photo from the menu.

Slide Show	Select to set slide show time. Press “▲” and “▼” to select the interval you require. Press OK to confirm.
Transition Effect	Select to set the transition effect of photos. Press “▲” and “▼” to select the transform of photo you require: <ol style="list-style-type: none">1) Cross Fade – fade in and fade out2) Left to Right- from left to right3) Top to Bottom- from top to bottom4) Waterfall- like a steep descent of water from a height5) Snake – like snake motion6) Dissolve – like water dissolve

	<p>7) Strip Left Down – like strip cover from top of left to bottom of right</p> <p>8) Shuffle – shuffle in and out</p> <p>Press OK to confirm.</p>
Background Music	<p>Select to play the music file under the same folder.</p> <p>Press “▲” and “▼” to select the position of the background music. Select “off” to close the function.</p> <p>Press OK to confirm.</p>

Changing Audio Settings

Night Mode	<p>There are “On” “off” and “Comfort modes.</p> <p>In comfort mode, it restrict the volume automatically so that it would not affect the peoples’ rest or working.</p>
------------	--

Digital output	<p>HDMI LPCM: The digital audio signal which is decoded by the product output through HDMI 2.0 channel.</p> <p>HDMI LPCM MULTI CH: The digital audio signal which is decoded by the product output through HDMI 51 channel.</p> <p>HDMI RAW: The raw digital signal of the multimedia data directly output through HDMI, at this time the remote control has no function of adjusting the volume.</p> <p>SPIDF LPCM: The digital audio signal which is decoded by the product output through optical.</p> <p>SPIDIF RAW: The raw digital signal of multimedia data directly output through optical, at this time the remote control has no function of adjusting the volume.</p>
----------------	---

NOTE: If selecting HDMI LPCM/RAW, there is no signal output through optical. If selecting SPDIF LPCM/ RAW, there is no signal output through HDMI.

Changing Video Settings

Movie Preview	ON/OFF
Resume Play	When the film did not play after play was suspended, the product will record the location of the suspension, the next player can resume play to continue from where it left off the last play.
Screen Ratio	Select to set aspect ratio. Press “▲” and “▼” to select from Pan Scan 4:3, Letter Box 4:3, or 16:9. Press OK to confirm. Pan Scan 4:3, Display a wide picture on the entire screen and cuts off the redundant portions when a standard 4:3 TV is connected.

	<p>Letter Box 4:3, Display a wide picture with two black borders on top and bottom of 4:3 screen when a standard 4:3 TV is connected.</p> <p>16:9: Compress the image to convert the whole image when a 16:9 TV is connected.</p>
Brightness	<p>Select to set brightness levels.</p> <p>Press “▲” and “▼” to adjust brightness. The new setting is previewed onscreen. Press OK to confirm.</p>
Contrast	<p>Select to set contrast levels.</p> <p>Press “▲” and “▼” to adjust contrast. The new setting is previewed onscreen. Press OK to confirm.</p>
TV System	<p>Select to adjust TV system.</p> <p>Press “▲” and “▼” to set the TV system, depending on your viewing preferences. Press OK to confirm.</p>

Changing HDMI settings

Connect the HDMI cable before usage, adjust TV mode to HDMI, then video appears on TV screen. Please refer to “changing audio settings” and “changing video settings” if you want to change HDMI settings. Select to adjust HD Resolution. Press “▲” and “▼” to set the HD Resolution, depending on your viewing preferences. Press OK to confirm.

Changing Network Settings

Wired Lan Setup And Wireless Setup	Check the following items before use this function: Connection between product and network Network protocol is available PC firewall must be shut down Files are shared
	Auto: Automatically set IP address

	Manual: select IP address, subnet mark address and default gateway. It is available through navigation and numeric key and press “enter” for confirming.
--	--

You can streaming playback the multimedia files from network and have file copy function through network.

Wired Lan Setup

Access the player to LAN, and press “Setting” in the remote control to enter the setting interface of the player. Select “Network” and enter “Wired Network Setting”. You can choose automatic or manual mode to do the setting.

DHCP IP (AUTO): To get the IP address of the domain name server automatically. Select DHIP and then choose “OK” according to the operation clues. The player can search and get IP addresses

automatically. If the connection is successful, the gained IP addresses will be shown on the screen. If no IP address is shown on the screen, the connection is unsuccessful, thus you need to check the network connected to see if it has been set according to the requirements. Then try to get IP addresses again.

Note: For first time use you need to confirm the way in how to get IP manually.

FIX IP (MANUAL): To set the fixed IP address, subnet masks and default gateway and so on manually. Please input information by navigation keys and number keys and finally press “OK” to make confirmation and start testing. Parameters of the network connection of the product will be shown if the connection is successful.

1. Select “Network” in the home page of the product. If there are open groups in the sharable wire network, other sharable working group folders, such as WORKGROUP, will exist besides MY_SHORTCUTS and MY_NEIGHBORS. Select and enter

corresponding folder, then you can play multimedia content shared in the network of the computer.

2. If there are no other sharable folders, select "MY_SHORTCUTS" and enter. Press "OPTION" in the remote control, and choose "Add" in the open window to create a new shortcut for computers that have set network share. Input your user name, password and IP address of the appointed document server. User name is GUEST or EVERYONE and the IP address of the appointed document server is the IP address of the computer that has set network share. There can be many sharable computers in the wire network, input the IP address of the computer you want to access.
3. If the connection is tested to be successful, save the setting. Choose the newly created shortcut to enter. Input username GUEST or EVERYONE and password, and then you can access to the appointed IP address and get the shared content in that computer.
4. The product can play multimedia documents in the shared content. If videos are played, there will be network connection speed shows

on the screen. Higher speed indicates that the network is more stable and the quality of the video will be better. The product can also connect TV in the living room with computer in the study through wire network connection, thus wonderful movies shared in the computer can be played in the large TV screen, creating a new experience of home theater.

Wireless Setup

If it is the first time for you to use wireless network function, please do the following setting:

Access your player to the Local Area Network (LAN), and press “Setting” in the remote control to enter the player’s setting interface.

1. Select “Network” and enter "Wireless network setting", choose the file name of the connecting configuration. Then the clue of “Press ‘OK’ in the remote control to connect, and press ‘OK’ to test the selected connection” will show on the lower part of the screen. Press “OK” to connect. There are two connection modes to choose:

"AP" and "Ad Hoc".

2. If select "AP" mode, the player can detect wireless signal sources within the searching scope of the configured wireless network card and the interface will show all the detected wireless SSID.
3. If select "Ad Hoc" mode, the player can access to sharable content in specific objects. For example, the product and computers can connect and exchange data through choosing "Ad Hoc" mode without using wireless Routers.
4. Connect the product's antenna with a USB wireless network card, put through the antenna, and then you can set the wireless network according to the following steps. If no external antenna is configured to the product, a USB wireless network card that supports 802.11 b/g/n protocol will be needed to insert into the USB HOST interface of the product. Then "WIFI PLUG IN" will show on the screen. Thus you can start to set the product's wireless network. The following is detailed description for the operations of two wireless network connection modes:

Infrastructure(AP) setting

1. Select “AP” to get SSID names. You can choose automatic update and the product will search all the wireless SSID within the searching scope of the wireless network card automatically.
2. After the searching finished, all the searched SSID will be shown on the screen. Choose the server’s SSID you want to access, test the connection and save the setting information. On the bottom right corner, there will be a green symbol showing the signal strength.
3. Select “Network” in the home page of the product. If there are open groups in the sharable wireless network, other sharable working group folders, such as WORKGROUP, will exist besides MY_SHORTCUTS and MY_NEIGHBORS. Select and enter corresponding folder, then you can play multimedia content shared in the network of the computer.
4. If there are no other sharable folders, select “MY_SHORTCUTS” and enter. Press "Edit" in the remote control, and choose “Add” in

the open window to create a new shortcut for computers that have set network share. Input your user name, password and IP address of the appointed document server. User name is GUEST or EVERYONE and the IP address of the appointed document server is the IP address of the computer that has set network share. There can be many sharable computers in the wireless network, input the IP address of the computer you want to access.

5. If the connection is tested to be successful, save the setting. Choose the newly created shortcut to enter. Input username GUEST or EVERYONE and password, and then you can access to the appointed IP address and get the shared content in that computer.
6. The product can play multimedia documents in the shared content. If videos are played, there will be network connection speed shows on the screen. Higher speed indicates that the network is more stable and the quality of the video will be better. The product can also connect TV in the living room with computer in the study through AP wireless network connection, thus wonderful movies

shared in the computer can be played in the large TV screen, creating a new experience of home theater.

Peer to Peer (Ad Hoc) setting

Ad Hoc mode can build a peer-to-peer network structure without wireless AP. Computers configured with wireless network card can connect with each other wirelessly through this mode. The network building process for Ad Hoc wireless LAN is very simple as it leaves out wireless AP. But the transmission distance for wireless network card is generally around 40m in indoor environment, when the distance exceeds this effective transmission distance, communication cannot be realized. So this mode is suitable for simple and provisional wireless connection requirements.

The operations introduced below will show you how to connect the product with computer through Ad Hoc mode.

1. Firstly, set the product's wireless network, select "Ad Hoc" and enter.
2. Set the product's wireless SSID name in the wireless network. You can edit the name whatever you like. Other computers configured with wireless network card can see the SSID name of your product through searching.
3. Select security modes for your wireless network: open system or WEP (Wireless Equivalent Privacy). If you choose open system, other computers configured with wireless network card can connect with your product freely when searching out it. If you choose WEP, you need to set the shared key (10-25 numbers), and then other computers can connect with your product after inputting network key.
4. Set the IP address of your host, making sure that the address will not conflict with IP addresses of other wireless facilities. When the above three settings are finished, press "OK" to save your setting and start testing. If the connection is tested to be successful,

interface showing network information will be displayed. Then you can check the set parameters.

5. When the setting of Ad Hoc wireless network for the product is finished, you need to start the wireless network function of the computers which your product needs to connect. This description is for operations under WINDOWS XP system, and operations under other WINDOWS operating systems are similar to this.
6. Select “My Computer” in the desktop, choose “Management” by clicking right key on the mouse to enter the computer management interface. Double click “Service and Application” to enter the program. Select “Service” and enter.
7. Double click “Wireless Zero Configuration” in the last third one of the “Service” options to enter its window of attribute. Then select “Startup” in the routine options of the window, and click “OK”, thus the wireless network function of the computer is opened.
8. If your computer configures with internal wireless network card (such as most of notebook PCs) and has started the wireless network function, it can search out the product’s SSID and connect

with the product. If your computer doesn't have internal wireless network card (such as most of desktops), you can insert a USB wireless network card that supports 802.11 protocol into the computer's USB interface and install driver for the network card. You should inactivate wired network of the computer before configuring the wireless network.

9. Then there will be an icon representing wireless network and showing in the status bar in the bottom right corner of the computer's desktop. Click the icon, and a status window of the wireless network connection will show. Click "Check the Wireless Network", then wireless network SSID within the searching scope will be shown on the interface.
10. Select the product's SSID and the computer's Ad Hoc connection icon in the window of wireless network connection, and click "Connect". There will be a clue to indicate that the connection is successful if the wireless network Ad Hoc connection is done. Then click "Support" in the window of wireless network connection status to see IP address and so on network information gain from

the wireless network. Do remember the computer's wireless IP address because you need to use it when the player needs to access to the computer.

11. Enter "Network" in the homepage of the product, select "MY_SHORTCUTS" folder and enter. Press "Edit" in the remote control and choose "Add" to create a new shortcut for accessing to other computers, and then input user name, password and IP address of the appointed document server. User name is GUEST or EVERYONE and the IP address of the appointed document server is the wireless network IP address of the computer that has built Ad Hoc connection with the product. There can be many computers building Ad Hoc connection with the player at the same time, input the IP address of the computer you want to access.
12. Save the setting and choose the newly created shortcut to enter. Input user name GUEST or EVERYONE and password, and then you can access to the appointed IP address and get the shared content in that computer.
13. The product can play multimedia documents in the shared

content. If videos are played, there will be network connection speed shows on the screen. Higher speed indicates that the network is more stable and the quality of the video will be better. The product can also connect TV in the living room with computer in the study through Ad Hoc wireless network connection, thus wonderful movies shared in the computer can be played in the large TV screen, creating a new experience of home theater.

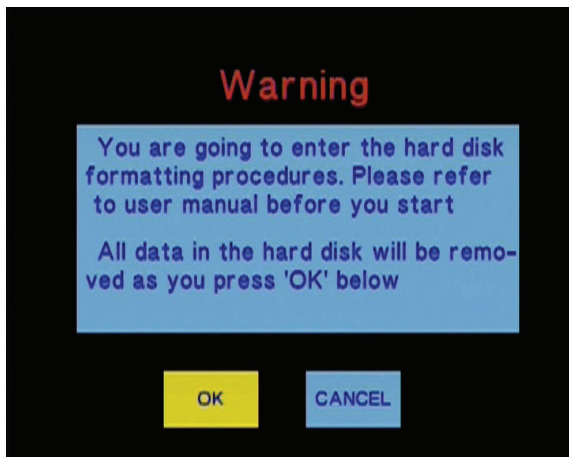
Install and use of BT/SAMBA

Player is a system, which is consist of operating system (Linux+AP) and application software (BT/SAMBA).

The first install

When using the function of BT/Samba for the first time ,please enter

the item of System in the menu of Setup to check the BT/Sambar information. If the BT/Samba is uninstalled yet, please install it firstly. Please copy the four installation files (.ipk) in the BT/Samba installation package to the root directory in the U disk, and insert it to the product's USB host port. Finally select HDD Format in the System menu under the SetUp interface.



Step 1: Press “◀” and “▶” on the remote control to select you wish. When highlight move the OK button, Press “OK” to enter the next step. Otherwise, select CANCEL to return.

Step 2: Hard disk format

Press “◀” and “▶” on the remote control to select “Back “ or “Format”. When highlight move the “Format” button, Press “OK” to start. Otherwise, select “Back” button to back.

Step 3: Install BT/Samba Extension

After format complete, the system will install BT/Samba automatically. Please select OK to the next step.

The system will install automatically according the following steps.

- 1) Install BT/Samba Extension
- 2) Install Bit-Torrent Support
- 3) Install Samba Server Support Installing
- 4) Install Web Support Installing

When the installment is completed, the system will display success at the end of even steps.

Step 4: Congratulation page

When completing the format, the system will display the congratulation page.

Select OK button and Press “OK” to exit. And the system will boot up automatically.

IP address setting

You can obtain a product's IP address to accordance with Wired Lan Setup in front of introduced.

1. 1).Obtain IP address automatically

The system will obtain the IP address automatically via DHCP protocol if the local network has DHCP server available.

2).Use static IP address

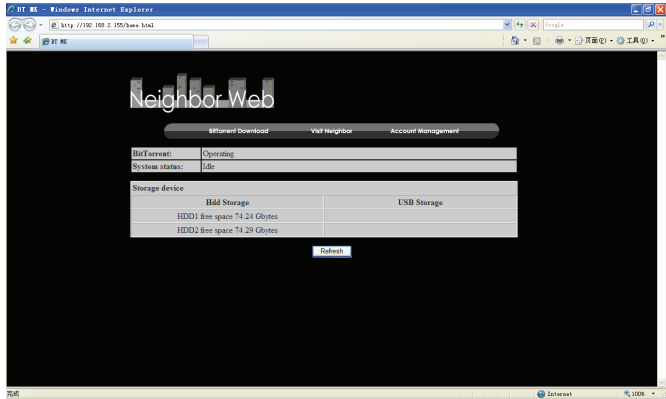
Acquire a unique IP address, Subnet mask, and Default gateway

information from your network system. Then fill in.

2. 1).Obtain DNS server address automatically the system will get DNS server addresses from DHCP server if available
- 2) Use static DNS server addresses Specify DNS server address.

Neighbor Web interface

When you get BT Player's IP address, launch your web browser, type the correct IP address in the browser, you can into Neighbor web interface. The Username is **admin** and the initialization password is **123**.



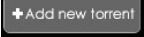
At Home page, the “Neighbor web” will display BT Player’s status and storage device.

BitTorrent Download

At Home page, Select “BitTorrent Download” into download interface.



Add new torrent

Select  into add new torrent file page.

At “add new torrent” page, click browse button to choose torrent file path from local PC. When you select a torrent file, press “Open” button to add.

Next , click “Yes” to confirm your select file and back BitTorrent download page, otherwise click “No” do nothing and back BitTorrent download page.

When select “Yes”, the page will display “torrent added...You will automatically redirect to webtorrent home page” before back download page.

1) Click “start” to begin download

The screenshot shows the Neighbor Web webtorrent interface. At the top, there are navigation buttons: Start, Stop, Delete, L.Refresh, a green download arrow, an orange upload arrow, Settings, and Add new torrent. Below this is a table of torrents:

No.	Torrent file name	Size(MB)	Percent	Peers	Speed(KB/s)
1	新加坡小坡慈雲山DVD-RMVB[中文字幕] (常用出品)	416.61	100%	0	0.00 KB/s
2	[2008 09 02]心的归属 (常用出品)	523.72	100%	0	0.00 KB/s
3	[2008 09 06]甜酸吻儿四 (常用出品)	672.73	100%	0	0.00 KB/s

Below the table is a search bar and a form with the following fields:

- Search
- No.
- File name
- Status
- Current size/File size
- Free cell
- Storage Path
- Upload size

Click every torrent file name, at the bottom of page will display the torrent file information.

And you can double click every file, when the left of little frame display

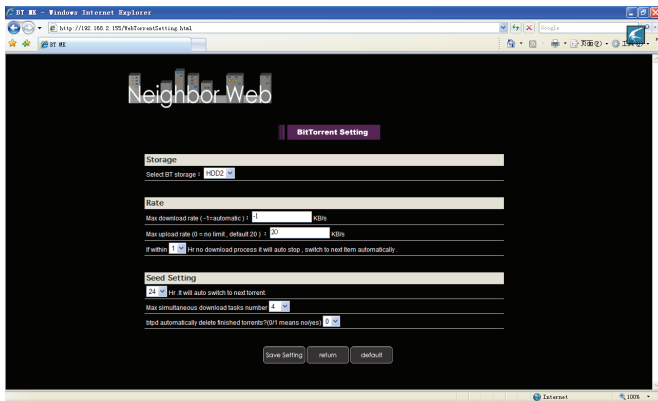


,it means the files be choose.

Then you can operate to select “start” ,”stop” ,”delete” ,”Refresh” and sort order “up” and “down”.

2) BitTorrent Setting

Press “Setting” into BitTorrent setting page.



Set BT storage, Max download rate, Max upload rate and seeding setting in this setting page.

When setting completed, Click **Save Setting** to save or Click **return** to

return or Click **default** to come back default setting.

Visit neighbor

At home page, select “Visit neighbor” to browser the HDD files. If the player’s Login Control is on, you need to input the username is **admin** and the initialization password is **123**.

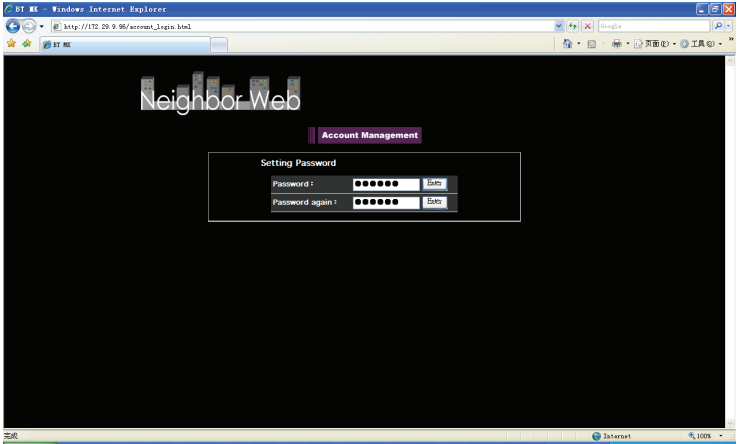
And through the Transcode server -> Service ->Visit neighbor can browser HDD files too.

Account Management

At Home page, Select “Account Management” into Account Management page.

If click “Account Management” is not into this page, please confirm Login control is set to ON. Please see the “Login control” for more detail.

The Username is Admin and the initialization password is 123. Please setting password according your favorite.



login password can be modify at here. Please input password twice and click “Enter” to confirm. When modify is succeed, press “Confirm” at the pop menu and return. Please note the User name cannot be change.

Specification

Hard disk support	Standard SATA 3.5” Hard Drive
HDD files system	FAT32 and NTFS partition
USB host	Support multiple USB storage
USB port	USB 2.0 high speed port
Network connection	RJ45 10/100M connection, WLAN (IEEE 802.11 b/g/n)
Video output	Composite video /component video/HDMI
Audio output	Stereo/digital HDMI/optical
Audio	MP3, WMA, WAV, AAC, OGG, FLAC, Dolby Digital, DTS Digital

Video	Video decode: MPEG 1/2/4, Divx,Xvid,H.264,VC-1,RM/RMVB Format: WMV,MKV,MOV,AVI,MP4,MPG,TS/M2TS/TP/TRP,FLV, ISO,IFO,VOB,DAT,RM/RMVB
Subtitle	SSA, SMI, SRT, SUB, SUB+IDX
Picture	JPG/BMP/PNG/GIF
Power adapter	AC input: 100V~240V, 50/60HZ DC output: 12V, 2A
Dimension	215×164.6×56.5mm
Weight	About 750g (Without hard drive)

Supported video, audio and picture formats as follows

DECODE		FORMARTS	RESOLUTION
VIDEO	MPEG-1	DAT	320×240
		MPG	720×576
	MPEG-2	VOB	720×576
		MPG	1920×1080P
		TS/M2TS/TP/TRP	1920×1080P
	MPEG-4, DIVX, XVID	AVI	1920×1080P
		MP4	1920×1080P
		MKV	1920×1080P
	VC-1	WMV	1920×1080P
	RM/RMVB	RM/RVMB	1920×1080P
	H.264	AVI	1920×1080P
		MP4	1920×1080P
		MOV	1920×1080P
		MKV	1920×1080P

AUDIO	MP3	Support
	WMA	Support
	WAV	Support
	AAC	Support
	OGG	Support
	FLAC	Support
	Dolby Digital	Support
	DTS Digital	Support
PICTURE	JPG/JPEG	Support
	BMP	Support
	PNG	Support
	GIF	Support(support a static display only)

Note: Up to the improvement, the appearance and specification will be changed accordingly without notice.

Maintenance notice

To protect the normal use of all accessories, please kindly make sure to understand and pay attention to following points.

- Power input AC100~240V, output DC 12V/2A.
- Under normal working status, power adapter will keep warming, but body temperature of 60 degree or under is normal.
- Please be sure of aeration under normal working status, do not put the device in bed, sofa, or similar area where cooling effect is no good.
- Please do not teardown personally, but send it back to the pointed service agent, or there will be danger of electronic shock.
- Please pull out the cable and shut the device immediately when cable broken or liquid in, and send to pointed agent for repair.
- We advise to use the product in the environment of room temperature. The range of environment temperature is 0~40°C.

FAQ

This chapter gives you information on how to solve some problems that may occur with your player.

Q: I have connected the Player to my television. Why is no picture showing on my television or no sound coming from my television?

A: This problem may have several causes. Please check the following items:

- 1) Please ensure that you have selected the correct AV source on your television set.
- 2) Please check that you have connected the correct cable for the output of the video and audio signals. Information on the correct connection of the Player to your home entertainment system can be found in the " Connection of TV audio and video output " chapter in the previous Basic Operation guide.

3) When the player is connected to HDMI or optical ,please choose the correct option in Setup menu. You can also refer to *Audio Settings* in Setup Menu chapter.

Repeat this procedure until the picture is correctly displayed on your television.

Q: My Player is connected correctly to my television. I can no longer see my media files in the browser or they are only partially listed in the "Browser".

A: A special media filter is active if you press one of four buttons(as ALL ,MUSIC,PHOTO,MOVIES)on the remote control. Only media files that correspond to the active media filter are displayed on your television.

If you select e.g. the media filter "Music ", no picture files are shown in the browser. If you want to see all supported media files, please choose the media filter "All ".

a) Unsupported format.

Your Player supports a great variety of media file formats, a detailed

list can be found at the end of these instructions. If you try to play a file that uses an unsupported file format, a message will be displayed. If you want to check the utilized audio and video format for a media file, you can refer to “specification” chapter.

b) The chosen media source is not connected to the PLAYER

If you select a media source that is not currently connected to the Player, such as a USB stick, this source will be displayed as empty. As soon as a device is connected, the content appears in the respective path.

If no folders or files are displayed for a resource connected via the network, check the settings for your network and your network shares. Please check the user name and password, if they are required for access, and also the firewall settings of your computers.

Q: I want to copy files onto an external data storage device with my Player, but I always get an error message.

A: To use the copy function of your Player, the device (or the partition), that you want to copy the data onto, must be formatted with one of the

following file systems: FAT, FAT32, NTFS, ext3. Please use only targets formatted with FAT, FAT32, NTFS or ext3 for copying onto.

Q:I want to perform a firmware update for my Player but my television goes blank.

A: In some cases, the display via HDMI is not correct during a firmware update.

Please make sure that your Player is also connected to your television via the composite video connection during the firmware update, not only via HDMI, and select the composite video input as the active input of your television.

Q:I want to access files with the Player that I have shared in my network. My home network ist working correctly, but the Player does not list the files.

A: If you do not have access to the shared files, please check the following points:

- 1) Check if the network cable is connected properly at both sides, i.e. to the Player and to your network.
- 2) Make sure that the computer that you want to access is running and not in a standby or idle mode.
- 3) Check the network and file sharing settings on your computer.
- 4) Check that you have entered the correct user name and password. Please note that they are case sensitive.
- 5) Make sure that your firewall settings permit the Player to access your computer.
- 6) If you want to access files that are stored on a USB data storage device which is connected to a router and thus made available as network storage, please note that you must set up a connection to the drive using "My_Shortcuts ". To do so, you must enter the IP address of your router as well as the user name and the password necessary to access the network storage.

Q: How is it possible that the playback of a file from a shared folder in the network is aborted?

A: The energy saving settings of the computer or the NAS interrupt the connection.

If the energy saving settings of your computer or your NAS are active, then they can go into an idle state or a sleep mode even though they are being accessed via the network. During a sleep mode no data is transferred via the network. Please adjust the energy saving settings of the media source so that it does not go into a sleep mode while you play files via the network.

Q: Why is it possible that there are interruptions when playing movies from my local network?

A: Sometimes, there are several devices in a network that have to share the maximum data transfer rate possible via a network connection (shared medium). If there are several connections active in the network you use the Player in (e.g. to the internet, a shared printer, etc.), it is possible that this lowers the data transfer rate available for the streaming of the data to the Player to a level that is insufficient for the playback of e.g. a DVD file or an HD movie file. Should you

experience such problems, please try to reduce the amount of data transferred by other users of your network.

Q: While using the Player, it no longer responds to my commands.

A: This problem may have several causes. Please check the following items:

- 1) Please aim the remote control in the direction of the Player so that direct visual contact between these two devices exists and ensure that the infrared receiver of the remote control and the Player are not covered.
- 2) Check the battery in the remote control and, if necessary, replace it with a new one.

Q: I have connected the Player to my TV via HDMI and I want to change the video output signal, but the video output resolution I want to use is not available.

A: This problem may have several causes. Please check the following

items: 1).Your TV does not support all possible video output resolutions.

Go to the settings menu of your Player and select "HDMI Auto " under the menu item "TV system ". Your Player will try to automatically select the best possible video output resolution for your TV.

2).In some rare cases it is possible that not all options supported by the TV are selectable. This problem can occur when the TV is switched on from its standby mode, regardless of the current operating status of the PLAYER

In order to be able to select all video output resolutions supported by your TV, disconnect your Player from the power supply and reconnect it after a few seconds. Now all available video output resolutions are shown in the settings menu.

Q: Why can't I hear any sound on my television when I connect it via HDMI?

A: This problem may have several causes. Please check the following items:

- 1) An audio output format that is not supported by your television is selected.
- 2) The volume is too low / Mute is active.
- 3) Please select the correct digital output mode in the Setup Menu. Go to the audio settings menu and select the menu entry "Digital-Audio-Out" and choose the option "HDMI LPCM/RAW" if your television set does not support real surround sound. You can also refer to the Audio Settings.

Q: Why mustn't I disconnect the Player from the mains supply without having switched it off beforehand?

A: The loading or saving of the current system settings takes approx. 10 seconds when the Player is turned on or off. If the player is disconnected from the mains supply without having been switched off beforehand, settings and data may be lost. Please always switch off the Player by pressing the power button on the device or on the remote control and wait until the power button on the Player lights up red.

Q: Why is the power button still lit in blue even though I have switched it off?

A: The loading or saving of the current system settings takes approx. 10 seconds. The illumination of the power button changes to red only after all settings have been saved and the Player has entered the standby mode. If you want to, you can then disconnect the Player from the mains supply.

Q: The language of the user interface has been changed. How do I change the language?

A: In order to change the selected language, enter the "Settings " menu by pressing the "SETUP" button on your remote control. Select the right menu ("System ") and press the OK button on your remote control. The available languages are displayed. Please mark the desired language and confirm your choice by pressing the OK button.

Q: I have adjusted the settings of the Player under "Settings" and

would like to restore the factory defaults.

A: As described in the "**Changing System Settings**" chapter, execute the menu item "Restore defaults ". The Player will be reset to the factory defaults. The saved files are not deleted when you do this.

Q: When I try to disconnect the USB device, I keep on getting The device Generic volume cannot be stopped right now. Try stopping the device again later message, what should I do?

A: Close any program that might be accessing data on the player, including Windows® Explorer. If it does not work, close all programs and wait for another 20 seconds, then try the green arrow icon again. If it still does not work, you should shut down the player and disconnect the USB cable.

Q: During power on, why the TV will have a short flash, blue screen or screensaver?

A: This is normal, when the system initialize, it will setup the corresponding parameters so it can output the correct video signal to

the TV, during the initializing time, the TV will receive incorrect signals or the signals will not be stable and will cause the TV screen to flash, some TV will treat it as no signal, and will display a blue screen or screensaver.

Others

The accessories of products may be different, for this series products are various according to different series and models.

Please refer to packing list or contact your agent for information.

Please understand no advance notice for further product improvement, outlook design and specification update.

The illustration may be a little different from the real product.

Statement: Manufactured under license from Dolby laboratories
“Dolby” and the double-D symbol are trademarks of Dolby laboratories

