

**Continuous Ink Supply System**  
**for**  
**Epson Stylus RX425**  
**Installation Instruction**

**For AT Prefilled Version**

**With Auto Reset Chips**

**This Version of the Continuous Ink Flow System comes with Prefilled Cartridges and Auto Reset Chips. You just need to fill the Reservoir bottles and print! The whole operation is very easy. It' s really an effective tool to save your money.**

## CIS for Epson Stylus RX425

Thank you for purchasing AT Continuous Ink Supply System. We appreciate your support and will try our best to make your experience with our products a pleasant one. Printing has been a different experience ever since you installed AT Continuous Ink Supply system on your own printer. Just imagining being able to print without regard to the ink level in those expensive little cartridges.

Please take your time installing AT Continuous Ink Supply system. Do not remove your old cartridge until you have the AT CIS system primed and ready to install (to prevent the drying of heads). In addition, make sure you are getting perfect nozzle checks before installing the AT CIS system. The AT CIS system won't be able to work properly if the nozzles are previously clogged.

Most people get a perfect nozzle check the first time after installing the AT Continuous Ink Supply system; others may need to run two or three cleaning cycles or let the printer sit for a while before they get the perfect results.

### 1. General Guide:

#### 1) Components

A、 CIS system 1 set  
D、 Refill Kit 4pcs

B、 Air filters 4pcs  
E、 Instruction CD 1pc

C、 Support Arm 1 set



#### 2) Opening box inspection

- a、 Check whether all the accessories are ready.
- b、 Check whether there's the leakage of CISS and whether some tubes have been separated from the CISS.

### 2. Printer testing:

- 1) Check whether the printer is in normal condition, like mechanical status, lubrication status etc.
- 2) Print testing lines to make sure the printer head is in good condition.
- 3) Print pictures to see whether the printing image is ok.

### 3. Installation Procedures:

#### 1) First step



Put the CISS on the left side of the printer. In the meantime place all the tubes at correct position.



Pull out the small rubber plug from the air hole as above picture shown.



Place 4pcs of air filters into air holes, the thicker side is down into tank.

#### 2) Second step: Remove out the original cartridges



Press the ink cartridge replace button.



The cartridges move to the carts  
Change position



Pull out the electricity plug



Remove spring on the cart and open the cover to certain degree as the above pictures shown; then use the screwdriver to remove the cover.

#### 3) The third step: Place the Cartridges into Printer



Remove out the original cartridges, then put CIS Cartridge into printer according to the color; please make sure every cartridge in the correct position.

4) The fourth step: Fix up the support arm



Rip the label on the support arm and stick it on the side of the printer as the above pictures shown.

5) The fifth step: Installing tubes



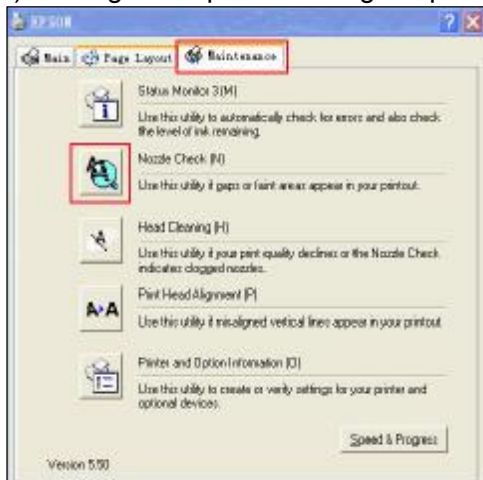
Clip the tubes orderly into the support arm; adjust the tube length and move the tube car to make sure there will no block and collision when the tubes moving with cartridge car. And make sure there's plenty length of tube to make the cartridge cart can thoroughly move to the left side.

6) The seventh step



Stick the small clamp at the as the above picture shown; then connect the electrical source and switch on the power.

8) The eighth step: Checking the printing head



Nozzle check is normal, start printing



Please clean printing head

If there shows breaks, please clean your printing head. It is possible that the wispy air have entered into the printing head. After cleaning printer head, if it is still show little breaks, especially in one color, there is no need to repeat cleaning. Just keep the printer not working for about one hour, the problem may be solved.

#### 4. Reset Procedure:



If the indicator light show flashing when printing .it tell you that you need to change the cartridges, the please power off the printer for about 1 minutes and turn on again, this time it will show full on the computer, then it can work in good condition.

#### 5、 Refill Ink



Please pay attention to the ink level in the reservoirs; if the ink level is below 1CM as the above picture shown, please use refill kits to fill ink into Reservoir bottles. Carefully pull out the rubber plugs from the refill holes.(there is possibility of ink spattering. Be careful!) Refill ink according to the color in short supply. Then put the rubber back. **(Please keep the printer and the reservoir at the same horizontal line during the process of refilling ink.)**

#### 6. Assemble the cartridge cover



First place the left side of cartridge cover down correctly, then put the other side of the cartridge cover at the above of the cart and adjust the position of the connection



Then press the right side of the cartridge cover to make it down to the suitable position.

### **7. Attention for maintenance:**

Take out the CISS including the inner cartridges and other components. Then remove support arm from printer, and place the original cartridges in. Please inquire local dealer before sending to maintenance.

### **8. Notice:**

1. Please don't take out cartridge at random after installing the CIS system. Keep the reservoir bottles on the same level with the printer.
2. Try to keep at least 1/2 inch of ink in the bottles, as you don't want to run out of ink and draw air into the cartridge.
3. Don't place the Reservoir Bottles higher or lower much than the printer.
4. To be used in a dry place between 15 and 35 degree. Avoid exposure to direct sunlight.
5. Don't put the continuous ink supply systems reversed or leaning during the shipment. Please make sure all the ink filling holes and Ventilation holes are closed tightly during the transportation. Otherwise, the ink shall leak out.
6. Don't sway the cartridge frequently. It may cause ink leakage.
7. Don't pull out the connector of cartridge and don't tear off adhesive tape at the bottom of cartridge.

### **9. Warning:**

1. Not drinkable; keep it out reach of children.
2. Avoid exposure to direct sunshine and don't keep it in high or freezing temperature.
3. Avoid collision and fallen down.