

**Continuous Ink Supply System
for
EPSON RX560**

Installation Instruction

For AT Prefilled Version

This Version of the Continuous Ink Flow System comes with Prefilled Cartridges and Auto Reset Chips. You just need to fill the Reservoir bottles and print! The whole operation is very easy. It's really an effective tool to save your money.

CIS for Epson RX560 Instruction

Thank you for purchasing AT Continuous Ink Supply System. We appreciate your support and will try our best to make your experience with our products a pleasant one. Printing has been a different experience ever since you installed AT Continuous Ink Supply system on your own printer. Just imagining being able to print without regard to the ink level in those expensive little cartridges.

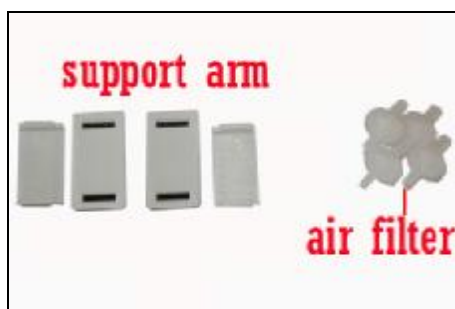
Please take your time installing AT Continuous Ink Supply system. Do not remove your old cartridge until you have the AT CIS system primed and ready to install (to prevent the drying of heads). In addition, make sure you are getting perfect nozzle checks before installing the AT CIS system. The AT CIS system won't be able to work properly if the nozzles are previously clogged.

Most people get a perfect nozzle check the first time after installing the AT Continuous Ink Supply system; others may need to run two or three cleaning cycles or let the printer sit for a while before they get the perfect results.

1. General Guide:

1) Components

A. CIS system	1 set
B. Air filters	6 pcs
C. Support Arm	1 set
D. Refill Kit	6 pcs
E. Instruction CD	1 pc



2) Opening box inspection

- Check whether all the accessories are ready.
- Check whether there's the leakage of the CISS, whether some tubes have been separated from the CISS, whether there are air bubbles in the tube (If there exists more than 20CM air space, please kindly to contact with the local dealer)

2. Printer testing:

- Check whether the printer is in normal condition, like mechanical status, lubrication status etc.
- Print testing lines to ensure the printing head is good condition.
- Print pictures to see whether the printing image is ok.

3. Installation Procedure

Step 1: Preparation



Put the CISS on the right side of the printer and place all the tubes at correct position.



Pull out the small rubber plug from the air hole as picture shown above.



Place 6 pcs of air filters into air holes,

Step 2: Take out the original cartridges



Press the Power Button



Move the carriage to the right side



Pull out the power cord, then you can move the carriage

Step 3: Remove the carriage cover



Remove the clip of the carriage, then you can get the cartridge out.



Use a screwdriver to insert into the joint slightly



Remove the clip .

Step 4: Install Cartridges



Install the CIS cartridge.



Place the CIS cartridge according to the color label



Fix the cartridge.

Step 5: Fix the Support Arm



Fit the tube holder in the middle of the printer, inclining about 30 degrees



Stick the tube line into the tube holder



Stick another tube holder on the right side of printer
And let the tube go through it as above picture shown.

Step 6: Adjust pipeline



Adjust the tube length and move the carriage. Insure tube length is enough to make the carriage can move to the left side.



Stimulate the move of the carriage.
Insure there will no tube block and when the carriage is moving.



Adjustment is finished.

Step 7:



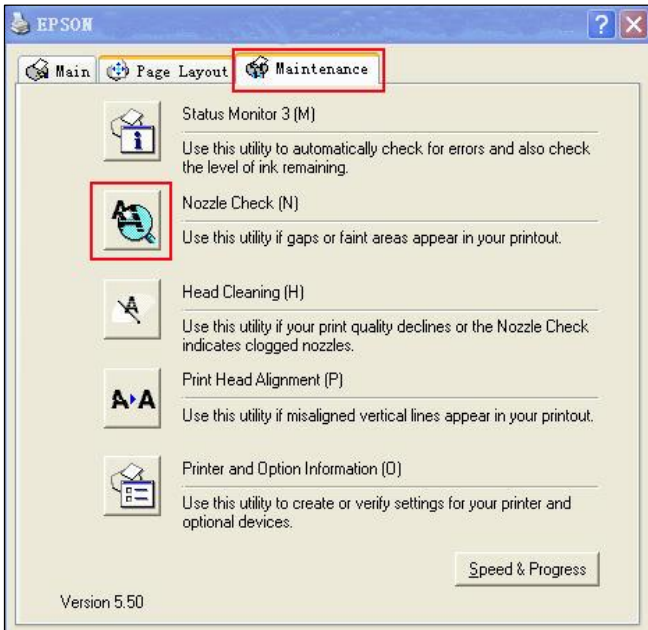
Connect the power cord.



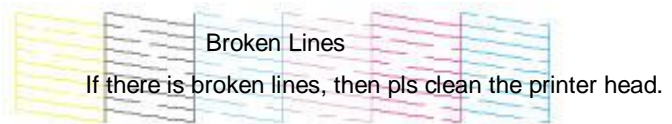
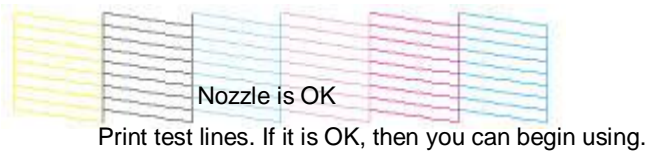
Turn on the power and check whether the printer can work.



Step 8: Check the nozzle



Enter Checking Nozzle Panel



Broken lines may be caused by air entering the nozzles. If there is still some broken lines after cleaning printer head repeatedly, especially for single color, then you can leave the printer for about 1 hour. Then the broken lines may disappear. If there is still such problem, then pls contact local dealer.

4. Chip Reset



And if there is panel reminding you to change the cartridge, then pls turn off the printer and re-start it after 1 minute.



The chip is reset.

5. Refill Ink



Please pay attention to the ink level in the reservoirs; if the ink level is below 1CM as the picture shown above, please use refill kits to fill ink into Reservoir bottles. Carefully pull out the rubber plugs from the ink refill holes (There is possibility of ink spattering. Pls be careful.) Refill ink according to the colors. Then re-cap the rubber. **(Please keep the printer and the reservoir bottles at the same horizontal line during the process of refilling ink.)**

6. Attention for Maintenance:

Take out the CISS including the inner cartridges and other components. Then remove support arm from printer, and re-install original cartridges. Please inquire local dealer before sending to maintenance.

7. Notice:

1. Please don't take out cartridge at random after installing the CIS system. Keep the reservoir bottles on the same level with the printer.
2. Try to keep at least 1/2 inch of ink in the bottles.
3. Don't place the Reservoir Bottles too much higher or lower than the printer.
4. Suggested using in a dry place between 15 and 35 degree. Avoid exposure to direct sunlight.
5. Don't reverse or lean the continuous ink supply systems during shipping. Please make sure all the ink filling holes and ventilation holes are closed tightly during transportation. Otherwise, the ink may leak.
6. Don't sway the cartridge frequently. It may cause ink leakage.
7. Don't pull out the connector of cartridge and don't tear off adhesive tape at the bottom of cartridge.

8. Warning:

1. Not drinkable; keep it out reach of children.
2. Avoid exposure to direct sunshine and don't keep it in high or freezing temperature.
3. Avoid collision and fallen down.